

# Adaptation of the health sector to climate and environmental risks: a WHO perspective

Sally Edwards

Coordinator, Health and the Environment

## Mission

Promote health – keep the world safe – serve the vulnerable

## Strategic Priorities (and goals)

**Ensuring healthy lives and promoting well-being for all at all ages by:**

**Achieving universal health coverage** – 1 billion more people benefitting from universal health coverage

**Addressing health emergencies** – 1 billion more people better protected from health emergencies

**Promoting healthier populations** – 1 billion more people enjoying better health and well-being



## Strategic shifts

**Stepping up leadership** – diplomacy and advocacy; gender equality, health equity and human rights; multisectoral action; finance

**Driving public health impact in every country** – differentiated approach based on capacity and vulnerability

**Policy dialogue** – to develop systems of the future

**Strategic support** – to build high performing systems

**Technical assistance** – to build national institutions

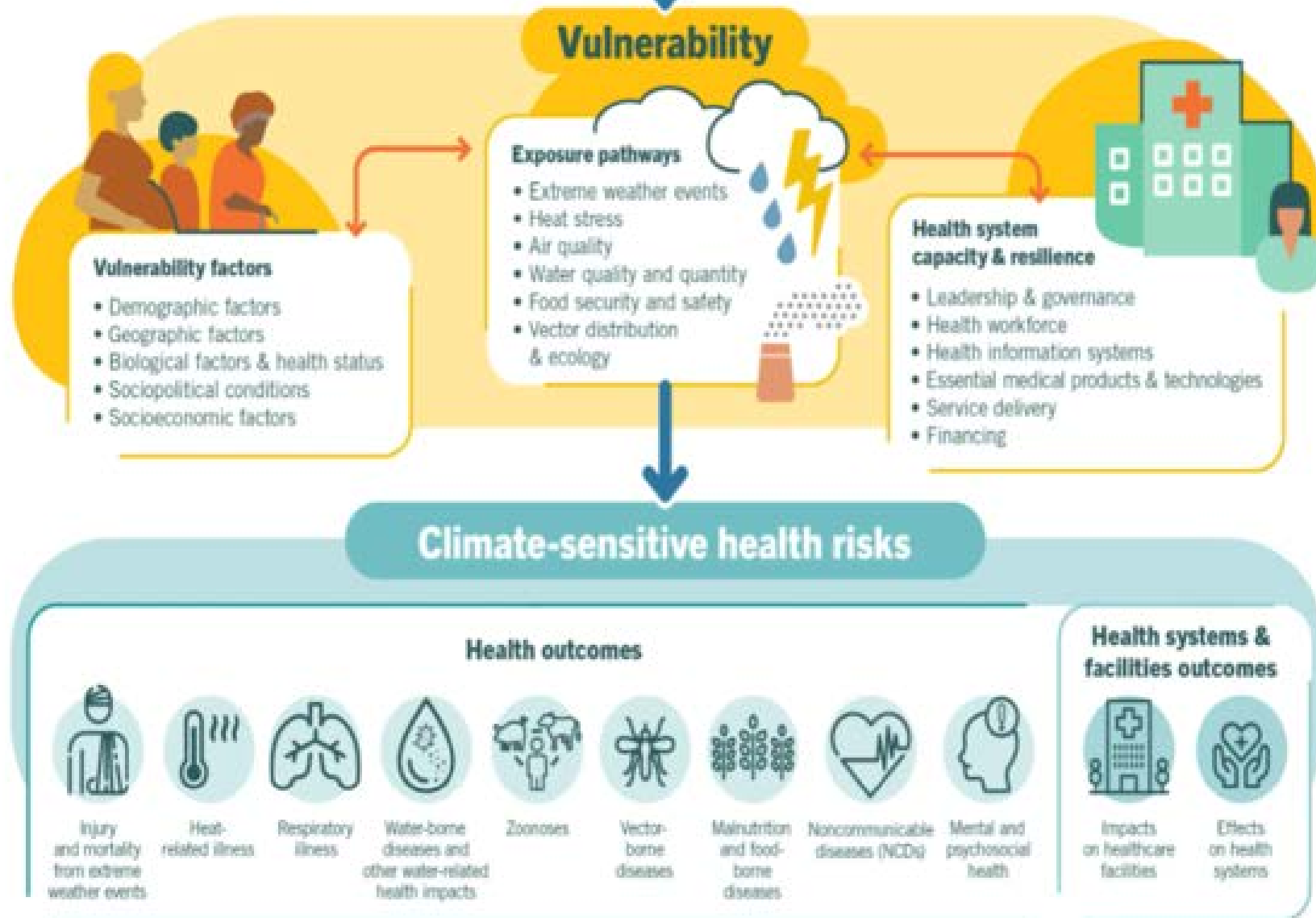
**Service delivery** – to fill critical gaps in emergencies

**Focusing global public goods on impact** – normative guidance and agreements; data, research and innovation

Mature health system

Fragile health system

# Climate change

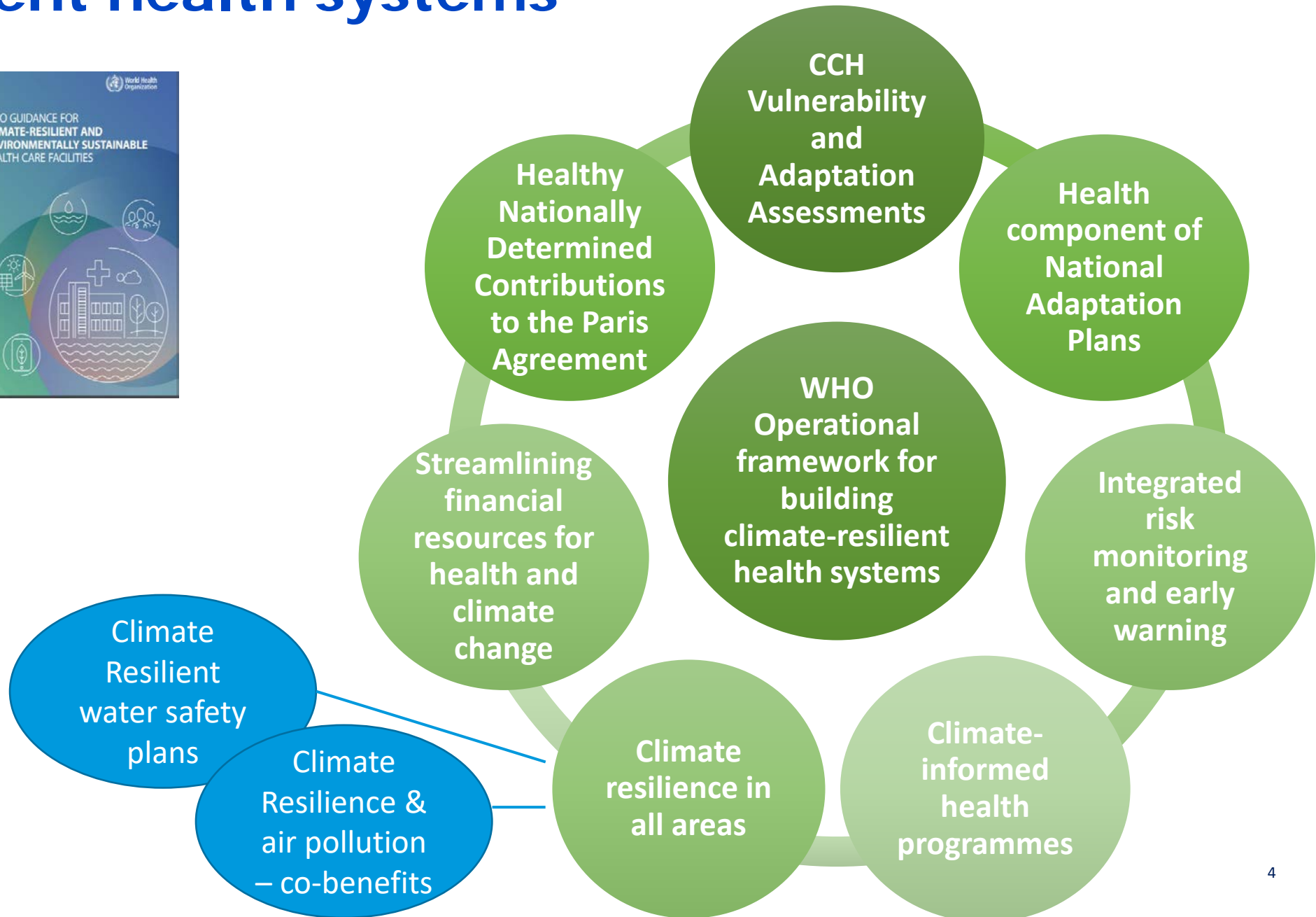
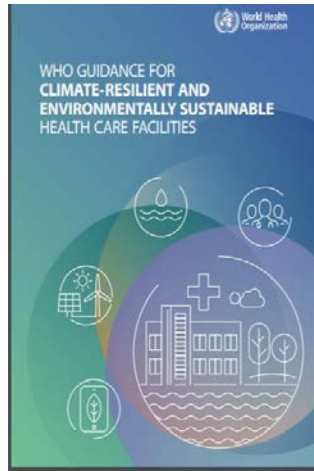


# Climate Change and Health

The health sector contributes almost 5% to global net emissions

Loss & damage of physical infrastructure

# Climate Resilient health systems



# Intersectoral Action



## For the Future

Towards the Healthiest and Safest Region  
A vision for WHO work with Member States  
and partners in the Western Pacific

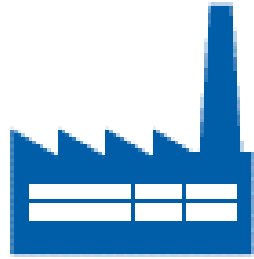


Bringing health to the  
centre of CC and Env  
initiatives

Building climate  
resilience into health  
systems

Monitoring impact of  
CCE on health

Incorporate CCE in  
WHO programmes



Industry/  
services



Housing



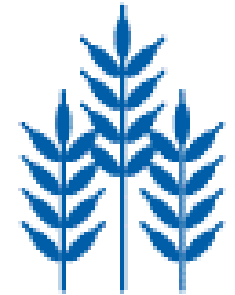
Energy



WASH



Health



Agriculture and  
food items



Transport



Labour



Land use  
planning

# One health approach

## Climate change-biodiversity-health nexus





Background



Access the background document

Air pollution



Guidance on air pollution and health

WASH



Guidance on WASH and health

Solid waste



Guidance on solid waste and health

Chemicals



Guidance on chemicals and health

Radiation



Guidance on radiation and health

Climate change



Guidance on climate change and health

Nature and health



Guidance on nature and health

Safe environments and mobility



Guidance on safe environments and mobility

Safe and healthy food



Guidance on safe and healthy food

Priority settings for action



Guidance on priority settings for action

Cross-cutting topics



Guidance on cross-cutting topics

- Global repository of interventions for creating healthier environments and improving health
- Overview and easy access of 500 actions

---

# Thank you

For more information, please contact:

Sally Edwards

Coordinator, Health and the environment

[edwardss@who.int](mailto:edwardss@who.int)



**World Health  
Organization**

---

**Western Pacific Region**