



A research funders approach to advancing health-centered mitigation

Modi Mwatsama

Head of Capacity and Field Development

PMAC conference 26/01/23

Our Strategy

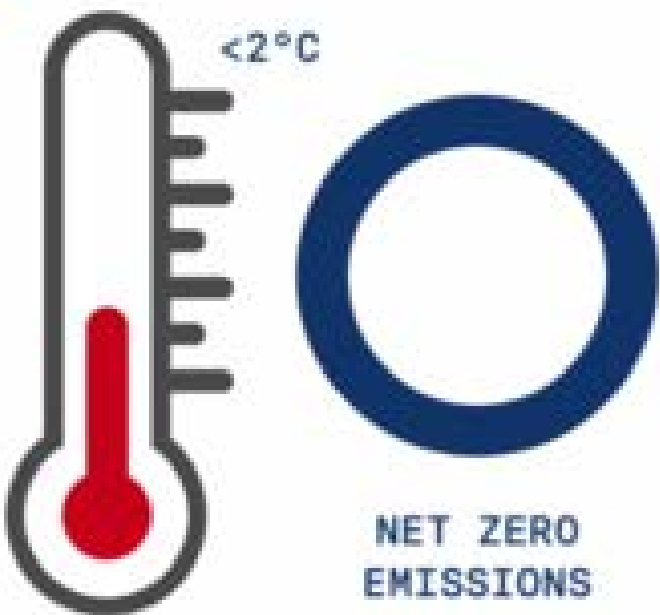


- **Diversity and Inclusion and Research Culture** will be embedded into the work we fund and do.
- We have committed to spending at least **£16bn in the next ten years**

Why Wellcome is investing in Climate & health

3

PARIS CLIMATE AGREEMENT

1. 

Limit the avg. global temperature increase to $< 2^{\circ}$ centigrade + achieve net zero emissions by mid-century

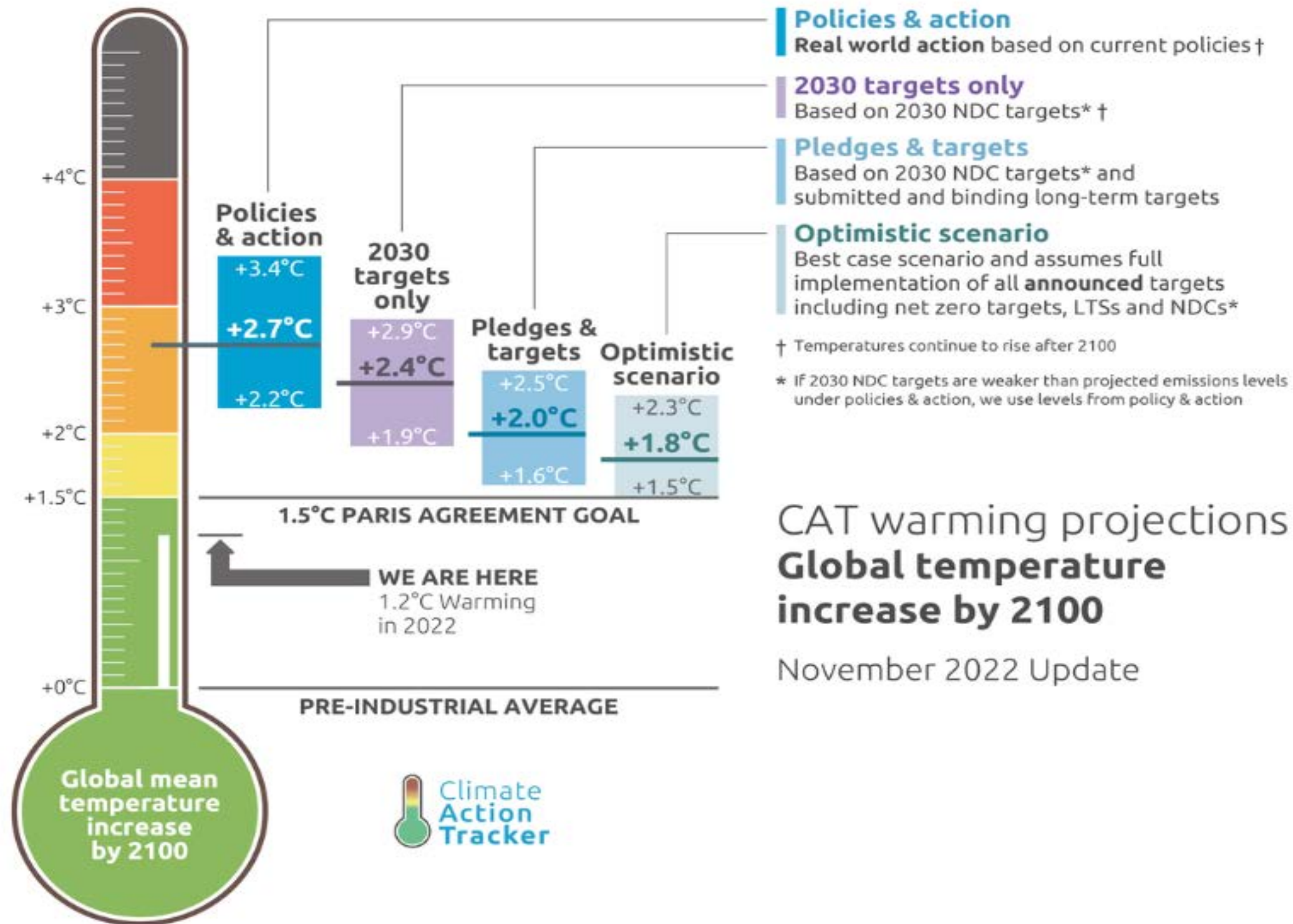
2. 

Enhance resilience and adaptation to climate impacts certain to occur

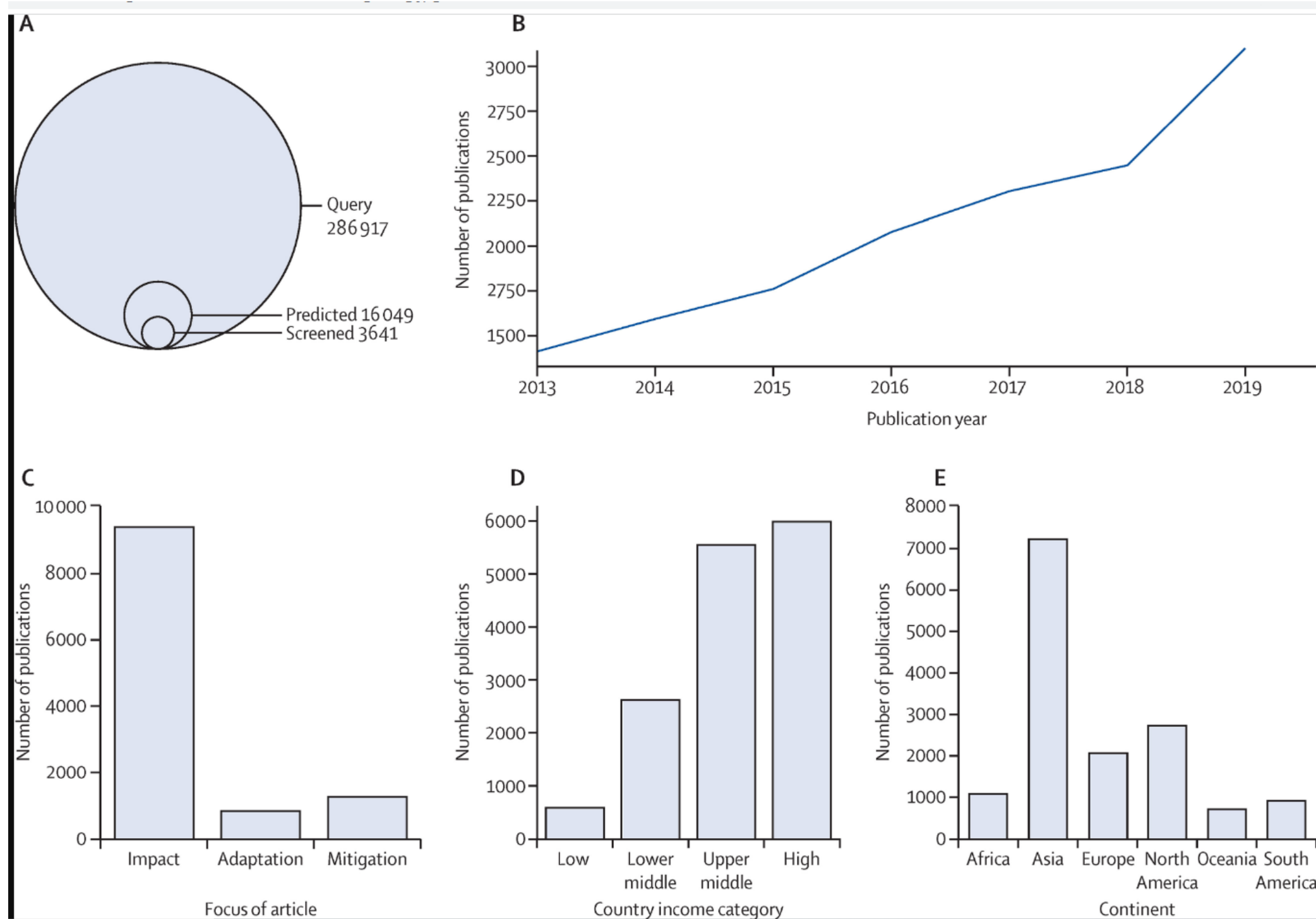
3. 

Align financial flows in the world with these objectives

WHY: The Climate Action Tracker, 2022



State of global research on climate & health



How we are investing in Climate & Health

How does climate change affect health?



Rising greenhouse gas levels
(heat the global atmosphere and acidify oceans)



Affects plant and animal growth



Extreme weather and climate events



Rising sea levels and warmer oceans

Climate-sensitive health risks



Air quality



Food and water security



Disease



Extreme heat and weather



Social impacts

Source: Wellcome Trust

HOW?

Vision

A world where catastrophic climate breakdown is averted in a way that allows human health to flourish

Mission

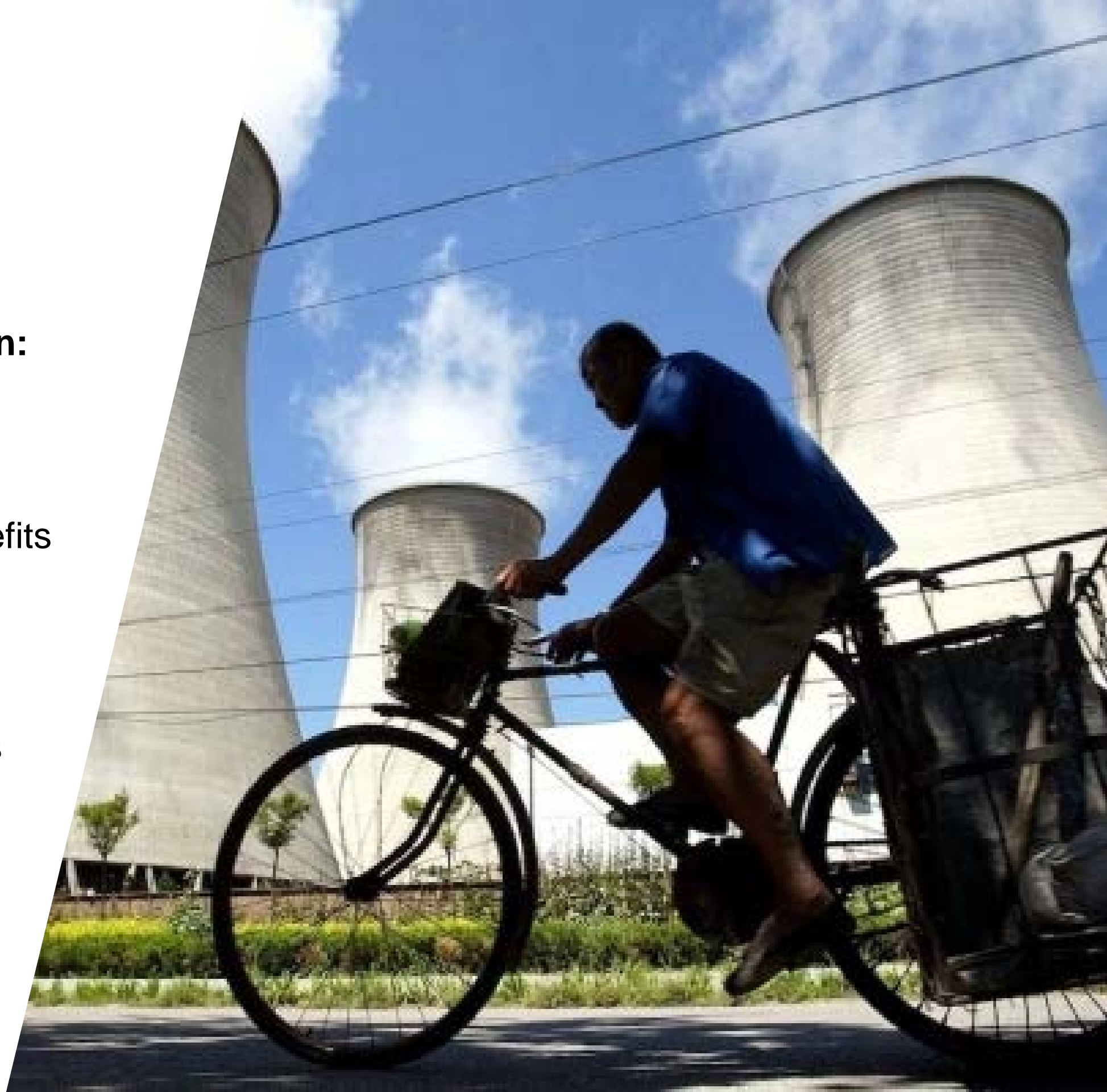
Putting health at the heart of climate change action

Climate & Health goals

- We aim to support the transformational changes that are needed to achieve the Paris goals and put health at the heart of climate action. We will do this through four goals:
- **Goal 1:** Evidence on the direct and indirect effects on health of climate change
- **Goal 2:** Evidence on the adaptation and mitigation interventions that protect and promote health
- **Goal 3:** Evidence on mitigation interventions that have health co-benefits
- **Goal 4:** Catalyse the development of a global Climate & Health research, policy and practice community that requests and uses evidence to inform policy and drive urgent actions.

Example activities & investments in mitigation

- **Pathfinders Initiative & Lancet Commission:** evidence syntheses & implementation case-studies of mitigation solutions & co-benefits
- **Funding call:** Advancing evidence-informed mitigation policy solutions with health co-benefits in G7 countries. Funding (G7 Countries)
- **RfP:** Pilot campaign activities in climate and health. Closes 31 January
- **Lancet Countdown:** tracking global progress
- Other activities in the pipeline





Thank you!

Modi.Mwatsama@wellcome.org.uk

[@ModiMwatsama](#)

www.welcome.org